

## Guest Services



### ON SITE RECEPTION

We are a team of friendly service professionals ready to meet your requirements – 7 days a week



### PANTRY SHOPPING

Let us save time for you. We can stock your pantry ready for your arrival.



### BREAKFAST OPTIONS

Quest's nutritious breakfast options are a great way to start the day.



### VALET DRY CLEANING

Quest takes care of your dry cleaning while you get on with business.



### RESTAURANT CHARGE BACK

Simplify your expenses by booking and paying for selected local restaurants on your Quest account.



### BUSINESS ADMINISTRATION SERVICES

Our capable reception team can assist you with your general secretarial needs.

## Location



### TRANSPORT

Melbourne International & Domestic Airport	30km
Interstate Train Station (Southern Cross)	5km
Local Train Station (Prahran)	50m
Tram Stop (Route 72)	20m
Local Bus Stop (Route)	50m

### ATTRACTIONS

Royal Botanical Gardens	1km
Melbourne CBD	5km
Queen Victoria Markets	7km
Melbourne Cricket Ground	4km
Southbank / Crown Casino	4km
Rod Laver Arena	4km
Albert Park Lake	4km
Chapel Street Shopping	50m
Toorak Road	500m
Prahran Market	50m



**9 Balmoral Street,  
SOUTH YARRA, VIC 3141**

**Tel: 03 9823 8888 Fax: 03 9823 8899**

**questprahran@questapartments.com.au**

**www.questprahran.com.au**

The Quest Serviced Apartment Group – over 110 properties throughout Australia, New Zealand and Fiji.

For more information about Quest visit our website [www.questapartments.com.au](http://www.questapartments.com.au) or phone central reservations Australia 1800 334 033 or New Zealand 0800 944 400.

**VIC**  
**Melbourne**  
**Suburbs**



**Quest Prahran**  
**Serviced Apartments**



[www.questprahran.com.au](http://www.questprahran.com.au)

## The Property

Quest Prahra is located in the heart of fashionable South Yarra, surrounded by Chapel Street and Toorak Road shopping precincts.

Offering forty fully equipped one, two and three bedroom apartments, this great location provides easy access to the Melbourne Sports and Aquatic Centre, Vodafone Arena, the MCG and Melbourne Park.

With the convenience of train and tram nearby it is a quick ride to Melbourne's CBD, with fast and easy access to the Monash and Eastlink freeways, along with Nepean Highway - gateway to the Mornington Peninsula.

This stylish property features large spacious apartments that are ideal for long term stays or relocations, along with family getaways. From the warm welcome, to our efficient services, at Quest Prahra you are more than just a visitor, you are our guest.



Quest Prahra



## Apartment Features & Facilities

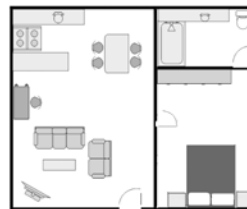
The recently refurbished apartments at Quest Prahra offer complete kitchen facilities, including full size oven and cook top, fridge, dishwasher and microwave. The spacious lounges with separate dining areas have a dedicated work desk featuring high speed broadband internet.

Each apartment has private laundry facilities, individually controlled reverse cycle air-conditioning, iron and iron board, direct dial telephone and complimentary onsite undercover car parking.

Ideally suited to extended stays, our two and three bedroom apartments feature two bathrooms, and ample storage with large double wardrobes.

Providing an office and home away from home, Quest Prahra serviced apartments offer independence and privacy for executive travellers and leisure guests alike.

Typical one bedroom apartment layout



## South Yarra Area Guide



Located just 5km from Melbourne's CBD, Quest Prahra is accessible by train, tram and bus. Within close proximity to leafy St Kilda Boulevard with its prestigious business district, The Alfred, a major teaching and referral hospital is nearby, along with The Avenue and Masada Private hospitals.

Guests can easily visit The Royal Botanical Gardens, Kings Domain, and the magnificent Shrine of Remembrance.

If shopping is your thing, spend your day on Chapel Street with its designer fashion boutiques and world renowned cafes and restaurants, along with the historic Prahra Market. Bargain hunters can take a short tram ride to Bridge Road's thriving outlet stores, or for avid collectors, a myriad of antique stores can be found in the nearby suburb of Armadale.

Relax with a leisurely stroll around beautiful Albert Park Lake, or take in the city sights on a Yarra River cruise.

